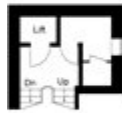
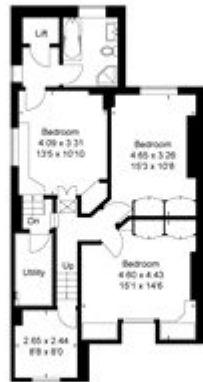


Approximate Gross Internal Area = 435 sq m / 4502 sq ft  
 (Excluding Courtyard / Lightwell / Void (Including LIR))  
 Mezzanine = 55 sq m / 588 sq ft  
 Total = 440 sq m / 4501 sq ft



Mezzanine



Third Floor



Second Floor

 = Reduced headroom below 1.9m / 6'2"



Lower Ground Floor



Ground Floor



First Floor

FLOORPLAN © 2014 0945 034080 Ref: 133947

This plan is for layout guidance only. Drawn in accordance with RCI guidelines. Not drawn to scale unless stated. Windows & floor openings are approximate. Where every care is taken in the preparation of this plan, please check all dimensions, shapes & complete bearings before making any decisions related upon them.