

**MILNER STREET  
LONDON SW3**

Gross Internal Area: 251 Sq. metres  
Including Vaults and Under 1.5m 2701 Sq. feet

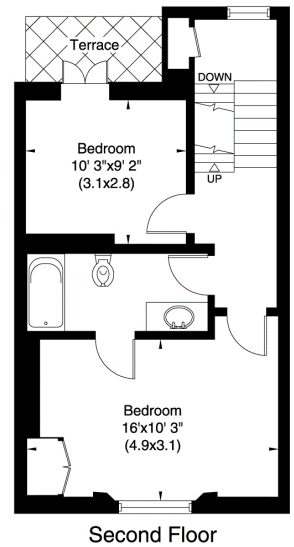
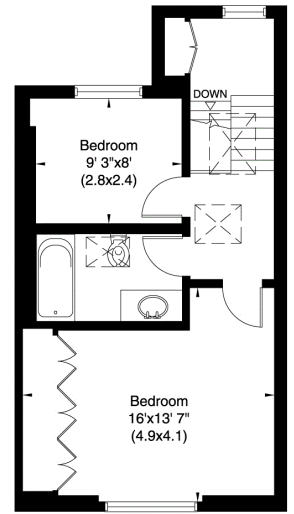
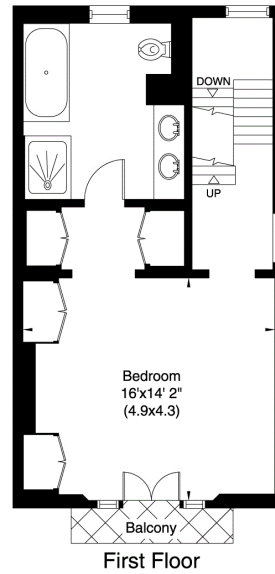
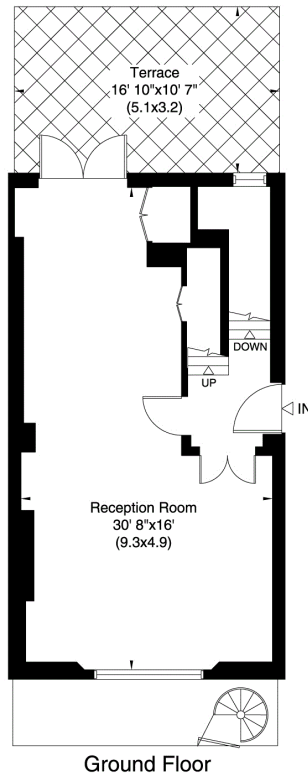
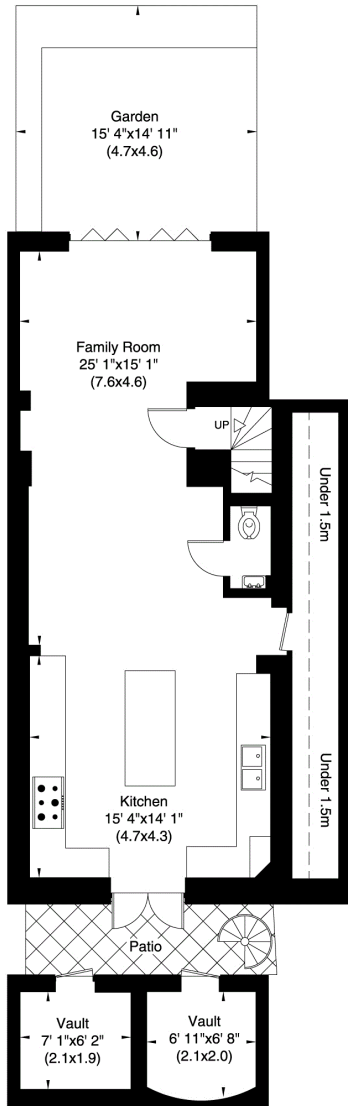
Gross Internal Area: 236 Sq. metres  
Excluding Vaults and Under 1.5m 2545 Sq. feet



**ATTENTION ROBERT**

Please check room names and then re-fax to...

**020 8671 6369**



Not to scale, for guidance only and must not be relied upon as a statement of fact. All measurements and areas are approximate only (and have been prepared in accordance with the current edition of the RICS Code of Measuring Practice).

Lower Ground Floor